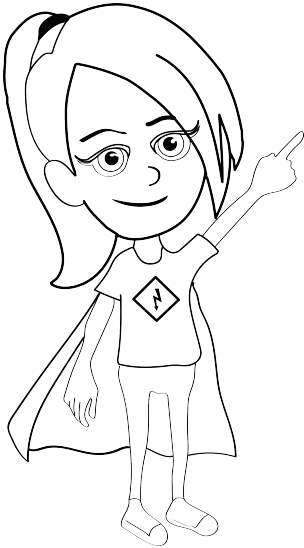


# WHAT IS A CO-OP?

*with Safety Sadie*



An electric cooperative is a company that provides electricity to its members. Electric co-ops are owned and operated by their members, which keeps them invested and involved in their community. Electric cooperatives often provide service to rural communities.

X S U A T W J V D X B T N U F M R R T P  
M G A R A H X H A S H K D Z V A K E H K  
L R O Q T T Q L K A S I V U N S E N D D  
F B L R E H U A J Y U U P A P X L E W Q  
Z D S U Y N M F T P A C W K H E E W A A  
P O E G R I C Q O C G M P F D Z C A D K  
C P R E Z V T N Z R Y G Z C B U T B N W  
Z E V D C O M M U N I T I E S U R L H T  
X D I N E T W S F Y B H V C W T I E M R  
I U C P P S G S S B J X S D L I C S D A  
P C E I R F I N B B N U Z Y N L I A G I  
E A L X X M H X J Y D V B M E I T A U N  
S T Y X W J D B K F Y N E K T T Y I T I  
R I E D F G D A X P U U W E W Y L W Y N  
B O I Y B X V Z O E B T J N O X G N C G  
L N F Z I W E B O V T P H E R Q R L C L  
V M M E M B E R O W N E D R K L E O W M  
E I S X E I R B G E M T Z G A T J Z M F  
L H N E Q W F A C R B M Q Y J E L L J A  
P J P Z S O I M F O F B B B A W L U F N

ENERGY  
MEMBER  
OWNED  
UTILITY  
SERVICE  
ELECTRICITY  
COMMUNITIES  
EDUCATION  
TRAINING  
NETWORK  
RENEWABLES