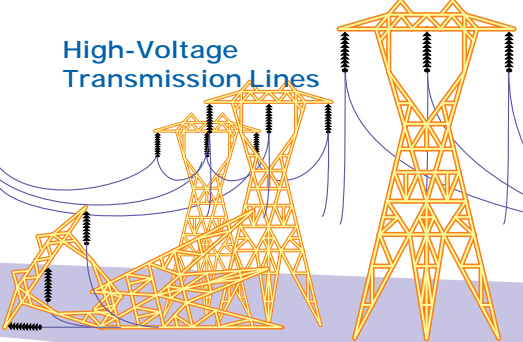
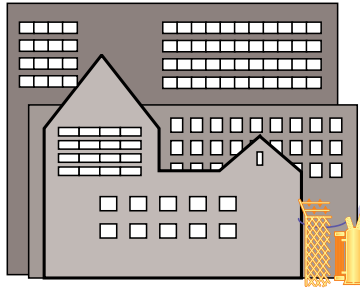


What happens during a power outage?

High-Voltage Transmission Lines

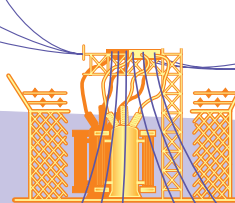


1. Transmission towers and lines that supply power to one or more transmission substations rarely fail. However, when damage does occur these towers and lines must be repaired before other parts of the distribution system are inspected.



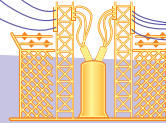
Large Industrial User

Transmission Substation

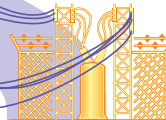


2. Local distribution substations serve co-op members. When a major outage takes place, these substations usually are checked first to see if the problem is in the transmission system to the substations or the substations themselves.

Local Distribution Substation



Local Distribution Substation



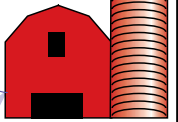
3. If the problem cannot be isolated at a local distribution substation, the next step is to check the distribution lines that carry power to groups of customers such as towns or housing developments. In Iowa, the largest cause of outages is fallen trees.

Make sure you report any outage to your electric co-op. This helps to isolate the problem and repair it as soon as possible.

5. Finally, isolated outages are repaired. If you or a family member depend on life support, call your electric co-op before an outage occurs. Then your co-op can make every effort to prioritize power restoration to you – or can advise you to seek shelter elsewhere.



restoration to you – or can advise you to seek shelter elsewhere.

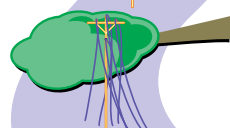


Farms

4. Then, line crews work on outages that are more localized by inspecting the final power supply lines to small businesses, schools and homes.

Restoring the power after a thunderstorm, tornado, ice storm or flood involves much more than just flipping a switch at a substation or pulling a tree off a downed power line. Highly trained workers from your local electric cooperative, crews from neighboring co-ops and even specialists from the Iowa Association of Electric Cooperatives will work together around the clock to restore service in areas affected by severe weather.

Shown here are the steps co-ops follow in restoring power. At each stage, the primary goal is getting the greatest number of co-op members back on line in the shortest time possible.



Small Businesses



Schools



Homes

